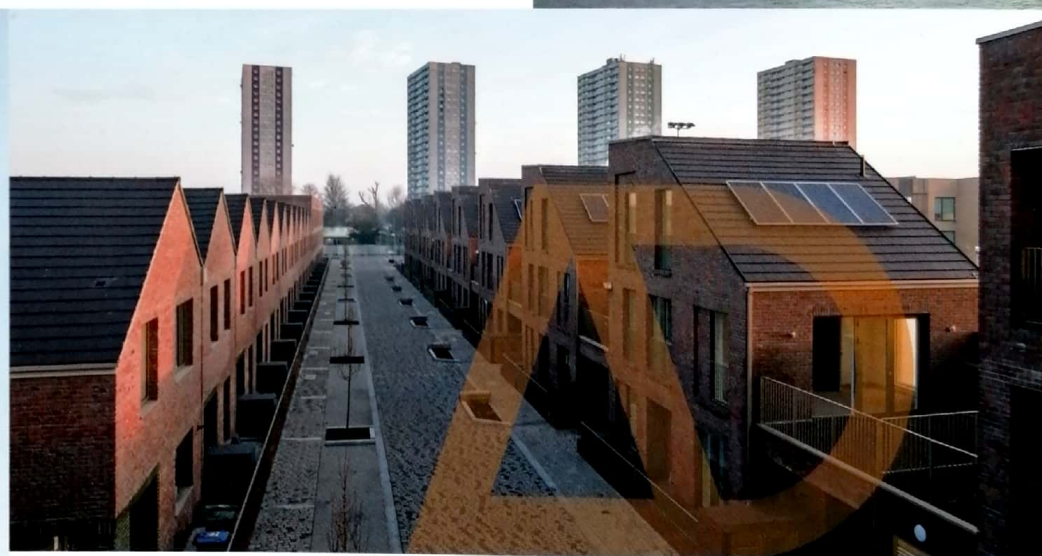


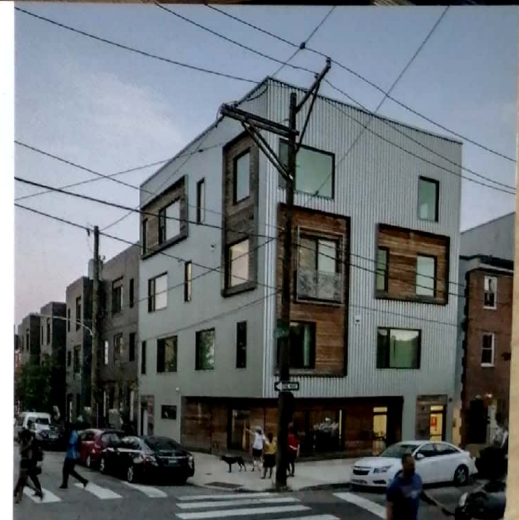
Guest-edited by KAREN KUBEY

HOUSING AS INTERVENTION



ARCHITECTURE
TOWARDS
SOCIAL EQUITY

04 | Vol 88 | 2018



Scanned with CamScanner

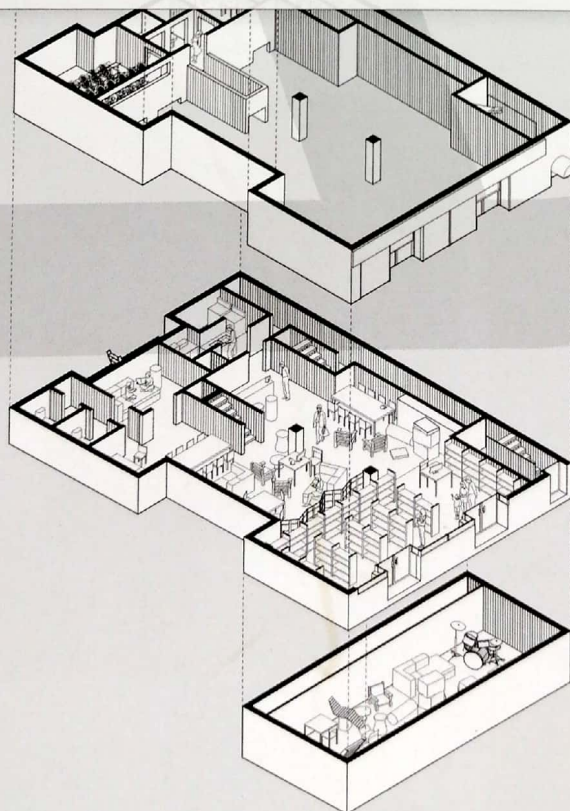


ARCHITECTURAL
DESIGN

July/August 2018
Profile No 254

HOUSING AS INTERVENTION

ARCHITECTURE
TOWARDS
SOCIAL EQUITY



Guest-edited by
KAREN KUBEY

About the Guest-Editor

Karen Kubey

05

Introduction

Housing for the Common Good

Karen Kubey

06

Architecture's Progressive Imperative

Housing Betterment in the 19th and 20th Centuries

Matthew Gordon Lasner

14

Ernst May,
Margarete Schütte-Lihotsky
and Leberecht Migge,
Siedlung Römerstadt,
Frankfurt,
1928

The Global Crisis of Affordable Housing

Architecture Versus Neoliberalism

Robert Fishman

22

Demapping Automotive Landscapes

Affordability as a Land Game

Marc Norman

30

A New Era of Social Housing

Architecture as the Basis for Change

Paul Karakusevic

48

Calling All Architects

New Approaches to Old Housing

Emily Schmidt and Rosalie Geneviro

38

Designing for Impact

Tools for Reducing Disparities in Health

Brian Phillips and Deb Katz

56

The Architect's Lot

Backyard Homes Policy and Design

Dana Cuff

62

cityLAB, Mapping Backyard Homes in Los Angeles, University of California, Los Angeles (UCLA), 2009

Evolving Rural Typologies for Rapidly Growing Cities

Urbanus's Work Towards Inclusive Communities

Na Fu

70

Beyond Temporary

Prototypes for Resilient Communities

Cynthia Barton, Deborah Gans and Rosamund Palmer

78

Spaces of Migration

Architecture for Refugees

Kaja Kühn and Julie Behrens

86

Beyond Green

Environmental Building Technologies for Social and Economic Equity

Pollyanna Rhee

94

Urbanus, Baishizhou Five Villages Urban Regeneration research, Shenzhen, 2013

Social Versus Affordable

The Search for Inclusive Housing Policies in Mexico

Meir Lobaton Corona

102

The Land of a Thousand Hills

Rwanda's New Urban Agenda

Fatou Dieye

112

Allies in Equity

A Conversation with an Architect, a Developer and a Former Federal Housing Official

Karen Kubey

128

Spatial Models for the Domestic Commons

Communes, Co-living and Cooperatives

Neeraj Bhatia and Antje Steinmuller

120

Counterpoint

Social Housing in an Increasingly Politicised Landscape

Julia Park

136

Neave Brown, Alexandra Road Estate, Camden, London, 1978

Contributors

142

Editorial Offices

John Wiley & Sons
9600 Garsington Road
Oxford
OX4 2DQ

T +44 (0)1865 776868

Consultant Editor

Helen Castle

Managing Editor

Caroline Ellerby
Caroline Ellerby Publishing

Freelance Contributing Editor

Abigail Grater

Publisher

Paul Sayer

Art Direction + Design

CHK Design:
Christian Küsters

Production Editor

Elizabeth Gongde

Prepress

Artmedia, London

Printed in Italy by Printer

Trento Srl

Will Alsop
Denise Bratton
Paul Brislin
Mark Burry
André Chaszar
Nigel Coates
Peter Cook
Teddy Cruz

Max Fordham
Massimiliano Fuksas
Kate Goodwin
Edwin Heathcote
Anthony Hunt
Charles Jencks
Bob Maxwell
Brian McGrath
Jayne Merkel
Peter Murray
Kester Rattenbury
Mark Robbins
Deborah Saunt
Patrik Schumacher
Coren Sharples
Neil Spiller
Leon van Schaik
Claire Weisz
Ken Yeang
Alejandro Zaera-Polo

EDITORIAL BOARD

Journal Customer Services

For ordering information, claims and any enquiry concerning your journal subscription please go to www.wileycustomerhelp.com/ask or contact your nearest office.

Americas

E: cs-journals@wiley.com
T: +1 781 388 8598 or
+1 800 835 6770 (toll free in the USA & Canada)

Europe, Middle East and Africa

E: cs-journals@wiley.com
T: +44 (0)1865 778315

Asia Pacific

E: cs-journals@wiley.com
T: +65 6511 8000

Japan (for Japanese-speaking support)

E: cs-japan@wiley.com
T: +65 6511 8010 or 005 316 50 480 (toll-free)

Visit our Online Customer Help available in 7 languages at www.wileycustomerhelp.com/ask

Print ISSN: 0003-8504

Online ISSN: 1554-2769

Prices are for six issues and include postage and handling charges. Individual-rate subscriptions must be paid by personal cheque or credit card. Individual-rate subscriptions may not be resold or used as library copies.

All prices are subject to change without notice.

Identification Statement

Periodicals Postage paid at Rahway, NJ 07065. Air freight and mailing in the USA by Mercury Media Processing, 1850 Elizabeth Avenue, Suite C, Rahway, NJ 07065, USA.

USA Postmaster

Please send address changes to *Architectural Design*, John Wiley & Sons Inc., c/o The Sheridan Press, PO Box 465, Hanover, PA 17331, USA

Rights and Permissions

Requests to the Publisher should be addressed to: Permissions Department John Wiley & Sons Ltd The Atrium Southern Gate Chichester West Sussex PO19 8SQ UK

F: +44 (0)1243 770 620

E: Permissions@wiley.com

All Rights Reserved. No part of this publication may be reproduced, stored in a retrieval system or transmitted in any form or by any means, electronic, mechanical, photocopying, recording, scanning or otherwise, except under the terms of the Copyright, Designs and Patents Act 1988 or under the terms of a licence issued by the Copyright Licensing Agency Ltd, Barnard's Inn, 86 Fetter Lane, London EC4A 1EN, UK, without the permission in writing of the Publisher.

Subscribe to Δ

Δ is published bimonthly and is available to purchase on both a subscription basis and as individual volumes at the following prices.

Prices

Individual copies: £29.99 / US\$45.00
Individual issues on Δ App for iPad: £9.99 / US\$13.99
Mailing fees for print may apply

Annual Subscription Rates

Student: £90 / US\$137
print only
Personal: £136 / US\$215
print and iPad access
Institutional: £310 / US\$580
print or online
Institutional: £388 / US\$725
combined print and online
6-issue subscription on Δ App for iPad: £44.99 / US\$64.99

Front cover: top left: Karakusevic Carson Architects, Bacton Estate, London, 2013-. © Karakusevic Carson Architects; top centre: Interface Studio Architects, Renewbold, Philadelphia, 2014. © Sam Oberter Photography; top right: Urbanus, Tulou Collective Housing, Nanhai District, Guangdong, China, 2008. © Urbanus, photo Yang Chaoying; centre middle and bottom left: Karakusevic Carson Architects with Maccreanor Lavington, Dujardin Mews, London Borough of Enfield, 2017. © Mark Haddon; bottom right: Interface Studio Architects, Powerhouse, Philadelphia, 2016. © Sam Oberter Photography

Inside front cover: Marcos Fuentes Hernández, Armonía Caótica 2, Ixtapaluca, State of Mexico, 2004. © Marcos Fuentes Hernández

Page 1: The Urban Works Agency, The Red Victorian Commune, San Francisco, 2017. © The Urban Works Agency, California College of the Arts



ARCHITECTURAL DESIGN

July/August

2018

Profile No.

254

Disclaimer

The Publisher and Editors cannot be held responsible for errors or any consequences arising from the use of information contained in this journal; the views and opinions expressed do not necessarily reflect those of the Publisher and Editors, neither does the publication of advertisements constitute any endorsement by the Publisher and Editors of the products advertised.

Karen Kubey wishes to thank her teachers and colleagues for their support and encouragement throughout her career, and dedicates this publication to Joan Wise Kubey.



MIX

Paper from
responsible sources
FSC® C015829

04 / 2018

Guest-edited by
Karen Kubey

CONTRIBUTORS

Cynthia Barton,
Deborah Gans and
Rosamund Palmer
Neeraj Bhatia and
Antje Steinmuller
Dana Cuff
Fatou Dieye
Robert Fishman
Na Fu
Paul Karakusevic
Kaja Kühl and Julie Behrens
Matthew Gordon Lasner
Meir Lobaton Corona
Marc Norman
Julia Park
Brian Phillips and Deb Katz
Pollyanna Rhee
Emily Schmidt and
Rosalie Genevro

FEATURED ARCHITECTS

Architects for Social Housing
Shigeru Ban Architects
Tatiana Bilbao ESTUDIO
cityLAB
Frédéric Druot Architecture
ERA Architects
GANS studio
Garrison Architects
HOWOGE
Interface Studio Architects
Karakusevic Carson Architects
Lacaton & Vassal
Light Earth Designs
N H D M
PYATOK architecture + urban design
Urbanus
The Urban Works Agency

Housing as Intervention: Architecture Towards Social Equity

Across the world, the housing crisis is escalating. Mass migration to cities has led to rapid urbanisation on an unprecedented scale, while the withdrawal of public funding from social housing provision in Western countries, and widening income inequality, have further compounded the situation. In prosperous US and European cities, middle- and low-income residents are being pushed out of housing markets increasingly dominated by luxury investors. The average London tenant, for example, now pays an unaffordable 49 per cent of his or her pre-tax income in rent. Parts of the developing world and areas of forced migration are experiencing insufficient affordable housing stock coupled with rapidly shifting ways of life.

In response to this context, forward-thinking architects are taking the lead with a collaborative approach. By partnering with allied fields, working with residents, developing new forms of housing, and leveraging new funding systems and policies, they are providing strategic leadership for what many consider to be our cities' most pressing crisis. Amidst growing economic and health disparities, this issue of *AD* asks how housing projects, and the design processes behind them, might be interventions towards greater social equity, and how collaborative work in housing might reposition the architectural profession at large.



WILEY

